


[Curbed SF](#)
[Eater SF](#)
[More cities...](#)
[Advertise](#)
[Submit a tip](#)

## Fall Tracking Report: Coffee Bar

Monday, November 19, 2007, by Paolo

*Fall is a time for restaurant openings, but when said restaurants actually opens is anyone's guess. **Fall Tracking Report** is your source for the latest news on upcoming restaurants and when you should start thinking about developing a coffee fetish.*



**Coffee Bar**, 1890 Bryant Street, The Submission

**Initial Debut Projection:** October 2007

**Current Debut Projection:** Mid-December 2007

**Odds, On Time Arrival:** 5 to 1

**Eater Projected Opening Date:** 01/01/08



Since we took a look at [Blue Bottle Cafe](#) last week in the Fall Tracking Report, we thought it only appropriate to turn our gaze towards the other big newcomer on the coffee landscape, **Coffee Bar**. The industrial-looking former Arc Cafe space—it's an old loading dock—continues to develop into the coffee lounge envisioned by Luigi di Ruocco (Mr. Espresso), Jason Michael Paul, and Michael Richardson. **The entire place is full of custom-built amenities.** Custom wood counters overlook the first floor, custom artwork will adorn the walls, custom photography will be the backdrop for the fancy espresso machine, and all the chairs, benches, banquettes and tables have been specially designed as well. The space will be split up into several areas: the downstairs will feature the gourmet coffee counter (beer, wine, food also served)

and the outside area will have some bistro tables (the fencing will remain so you can drink/smoke *al fresco*). Upstairs, there will be communal tables on one side, a loungey area on the opposite side and counter seating bordering the entire overhang. Also upstairs: a tasting room and a (surprisingly large) kitchen. They are hoping to soft-open within the next couple weeks, since they've got the Mr. Espresso coffee ready to roll out, but it might take them longer to sort out the non-coffee details. Seriously, coffee bars will soon be the new wine bars.



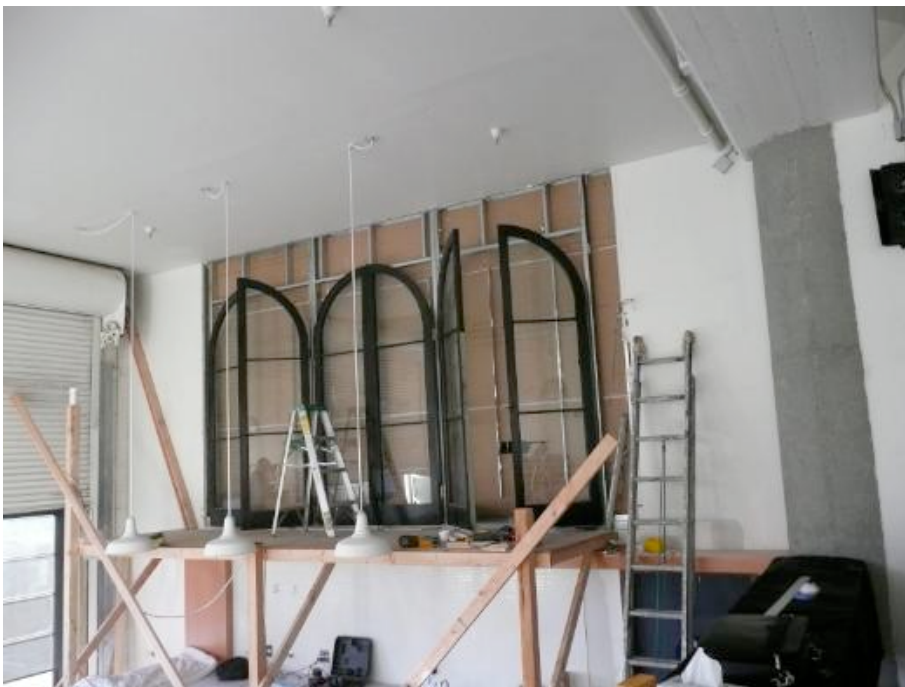
The main floor and coffee counter. Note the loading dock door in the window.



Upstairs: the lounge area to the left and counters around the edges.



Upstairs: See that? That's a custom wood counter, baby.



The "window" above the main area will have back-lit photography.

· [Corner Coffee Staredown Nearly Ready to Commence](#) [~ESF~]

Filed under [Buzz: Plywood](#), [SF: Mission](#), [SF: Potrero Hill](#), [Coffee Bar](#) (12 posts)

[Related posts...](#)

• Share this post:



• [Email this post:](#)



**Comments (2 extant)**

kberger

Sigh. Not looking forward to seeing Submission plastered all over posts about my neighborhood, \*NEMIZ\*. I'm buying a condo there, right now, even in this real estate market! Doesn't that give me more of a say in the name? OK, I'll shut up now, excited for coffee and Spanish food brewing within blocks of me.

---

[Comment #1](#), left at [11/19/07 02:27 PM](#).  
[kberger's stats](#). [Flag this](#).

guest

Coffee Bar is now open in NEMIZ. Not the "submission". Please, help preserve the neighborhood character as an industrial zone and refer to it properly. NEMIZ = North East Mission Industrial Zone.

Coffee Bar is off to a great start. I had a really good latte there today; I tasted it before adding sugar (as a test), and it was so good I didn't have to sweeten it at all.

Looking forward to trying trying the food there next week.

Rusty (who works in NEMIZ)

---

[Comment #2](#), left at [12/21/07 05:36 PM](#).

RN/A

[Comments feed for this post](#) 

[Back to top](#)